

# CERTIFICATE OF LOCATION OF GOVERNMENT CORNER

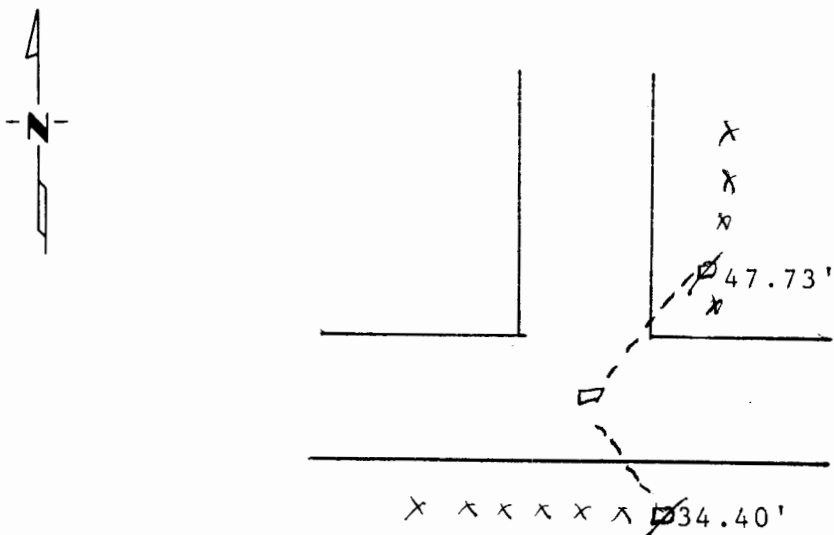
North Quarter \_\_\_\_\_ Corner of Section 24, Township 106, Range 43, 5th P.M.

STATE OF MINNESOTA, County of Murray

At the corner location shown on the sketch:

- On June 3, 1996 found a 12"x16" pointed field stone in the center  
DATE  
line of road and center line of road to north  
 left monument as found,  lowered monument,  removed monument (explain)
- On June 3, 1996 placed a 1/2" pipe next to stone and a 1" pipe w/seal  
DATE  
#11943 at road surface

### SKETCH OF REFERENCE TIES



Nail & seal in power pole NE 47.73'  
 Nail & seal in power pole SE 34.40'

Statement of evidence relative to this corner location is on back of page.

I hereby certify that this document and the data contained herein was prepared by me or under my direct supervision.

[Signature] 6-10-96  
SIGNATURE DATE

Registration No. 11943  
 Land Surveyor,  Professional Engineer  
 County Surveyor,  County Engineer

#### OFFICE OF THE COUNTY RECORDER

County of \_\_\_\_\_

I hereby certify that this document was filed in the Co. Recorders office at \_\_\_\_\_ .M. on the \_\_\_\_\_ day of \_\_\_\_\_ A.D., 19 \_\_\_\_\_

County Recorder [Signature]

By JUN 19 1996, Deputy

DOCUMENT NO. \_\_\_\_\_